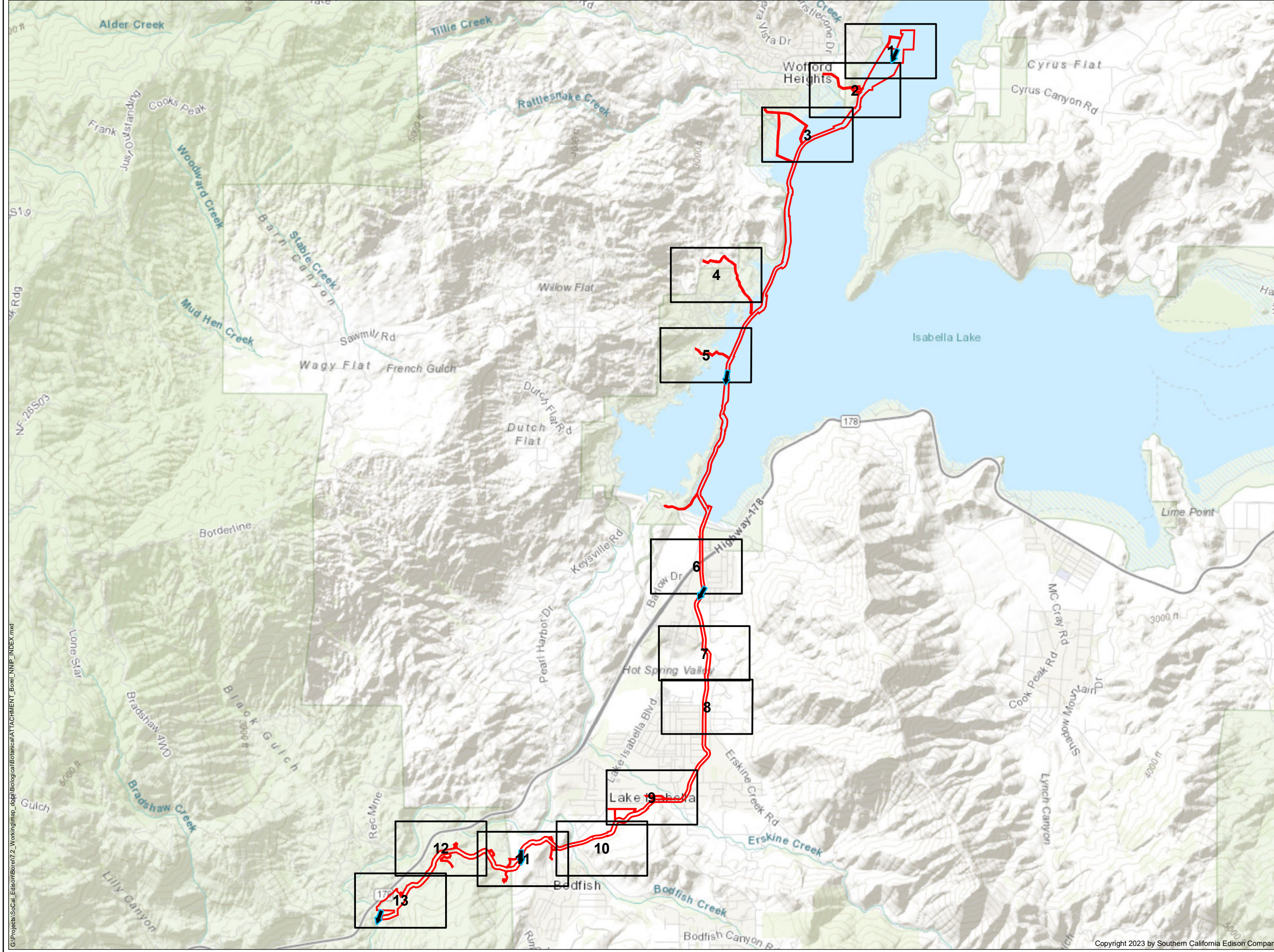


Attachment C: Non-native Invasive Plants

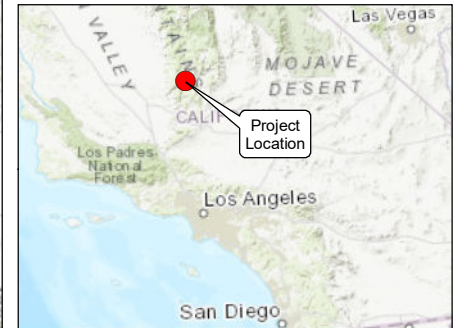
PAGE INTENTIONALLY LEFT BLANK



LEGEND

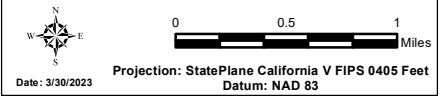
- FERC No. 382 Project Boundary
- Map Page Extent
- ↑ Flow Direction

*SOURCE: HDR (2021), SoCal Edison (2021), ESRI Topo (2021).



NON-NATIVE INVASIVE PLANTS OVERVIEW

BOREL HYDROELECTRIC LICENSE SURRENDER PROJECT



Southern California Edison (SCE) has no reason to believe that there are any inaccuracies or defects with information incorporated in this work and make no representations of any kind, including, but not limited to, the warranties of merchantability or fitness for a particular use, nor are any such warranties to be implied, with respect to the information or data, furnished herein. No part of this map may be reproduced or transmitted in any form or by any means, electronic or mechanical, including photocopying and recording system, except as expressly permitted in writing by SCE.

G:\Projects\SoCal_Edison\Borel\2_Working\map_dgs\BIO\cal\bor\att\ATTACHMENT_Borel_NNIP_INDEX.mxd



LEGEND

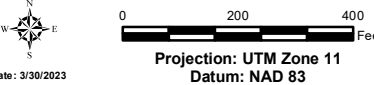
- FERC Project Boundary #382
- ↑ Flow Direction
- Project Feature
- Non-Native Invasive Plants**
- cheat grass (*Bromus tectorum*)

*SOURCE: HDR (2021), SoCal Edison (2021), ESRI Aerial (2021).



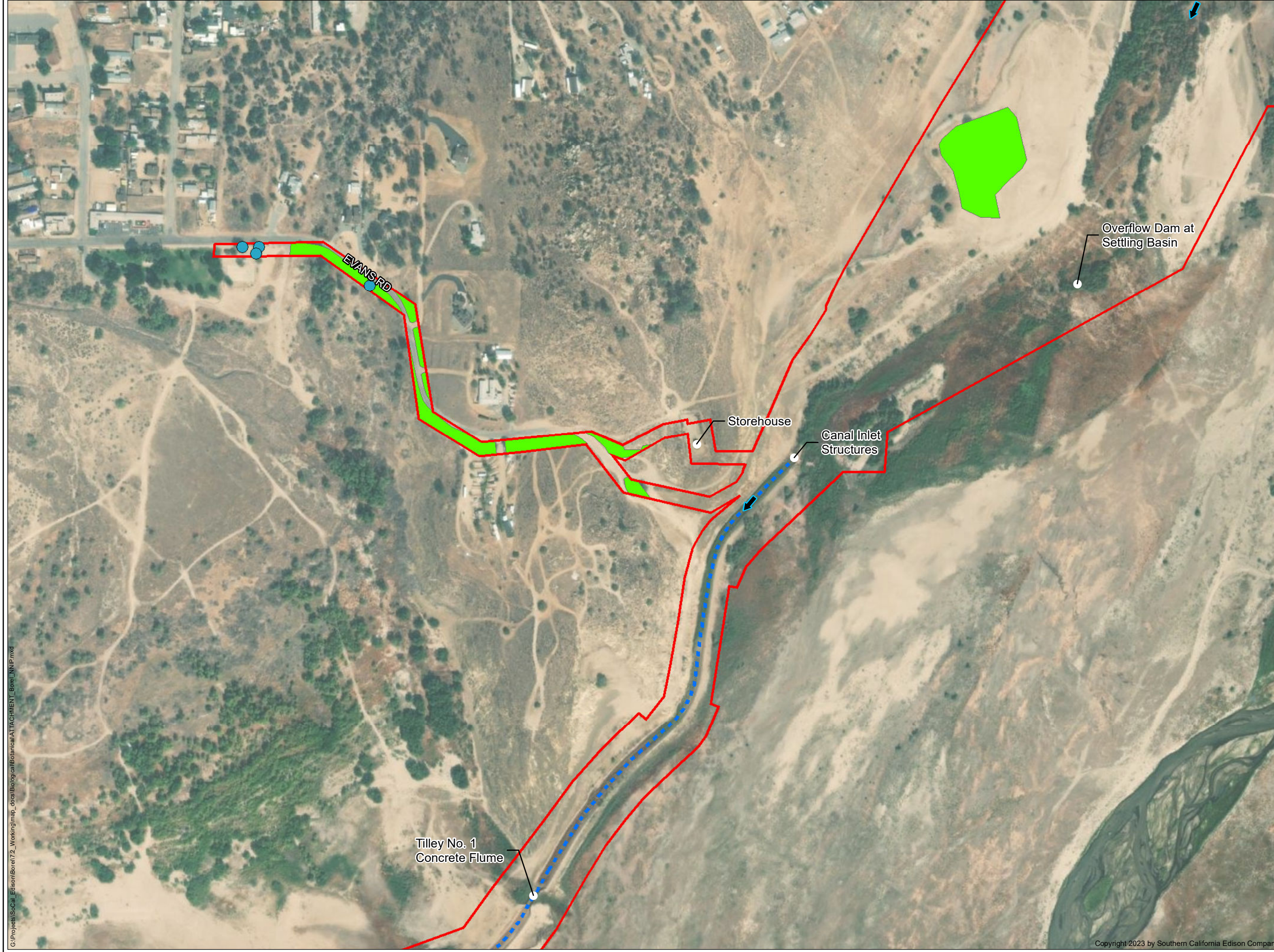
NON-NATIVE INVASIVE PLANTS

BOREL HYDROELECTRIC LICENSE SURRENDER PROJECT
PAGE 1 OF 12



Date: 3/30/2023
 Projection: UTM Zone 11
 Datum: NAD 83

G:\Projects\SoCal_Edison\Borel\2_Working\map_docs\Biological\Attachment\ATTACHMENT_Borel_NNIP.mxd



LEGEND

- FERC Project Boundary #382
- Borel Canal
- ↑ Flow Direction
- Project Feature

Non-Native Invasive Plants

- Black locust (*Robinia pseudoacacia*)
- cheat grass (*Bromus tectorum*)

Overflow Dam at Settling Basin

Storehouse

Canal Inlet Structures

EVANS RD

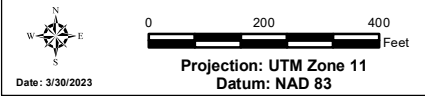
Tilley No. 1 Concrete Flume

*SOURCE: HDR (2021), SoCal Edison (2021), ESRI Aerial (2021).



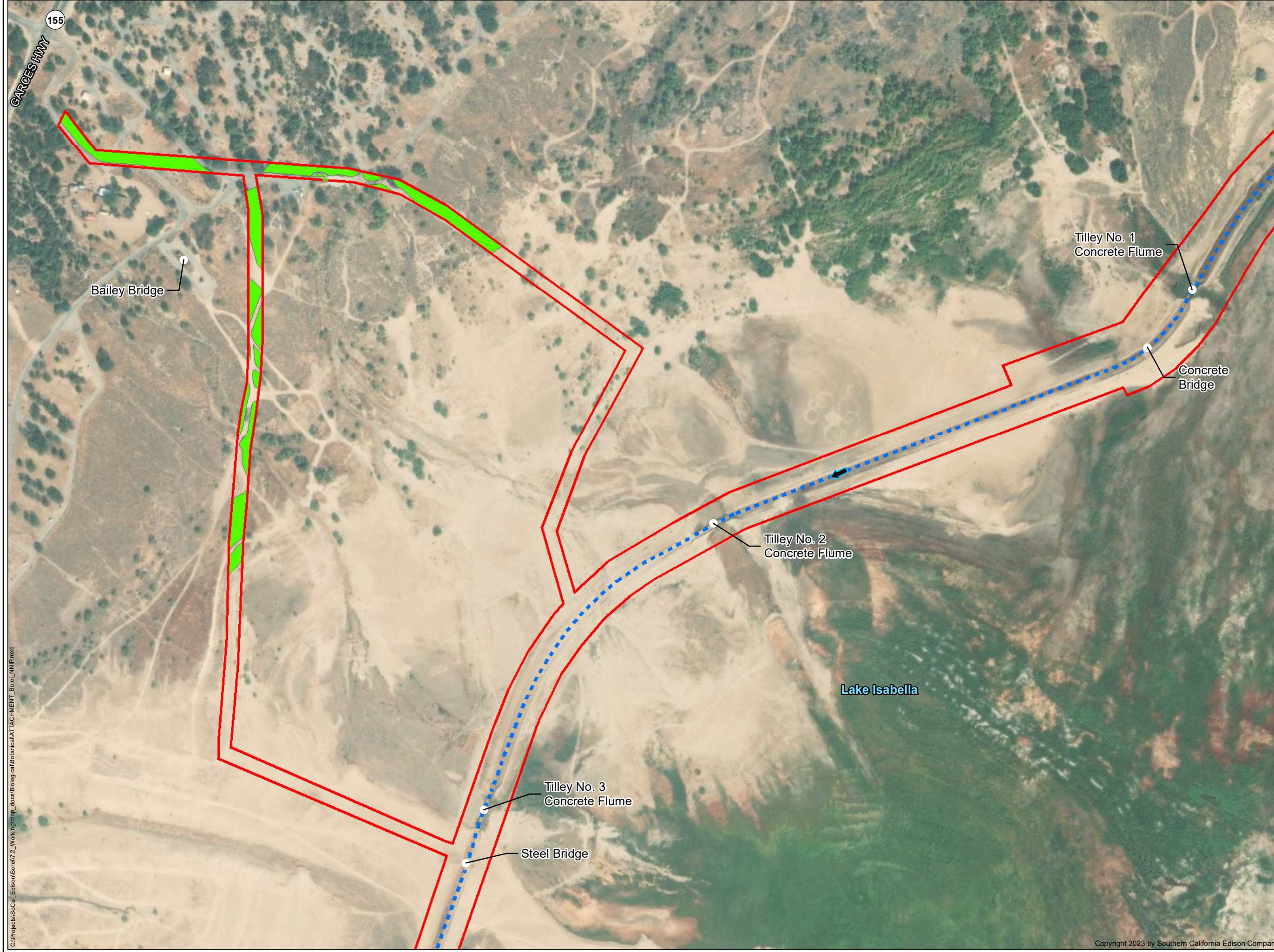
NON-NATIVE INVASIVE PLANTS

BOREL HYDROELECTRIC LICENSE SURRENDER PROJECT
PAGE 2 OF 12



Southern California Edison (SCE) has no reason to believe that there are any inaccuracies or defects with information incorporated in this work and make no representations of any kind, including, but not limited to, the warranties of merchantability or fitness for a particular use, nor are any such warranties implied, with respect to the information or data, furnished herein. No part of this map may be reproduced or transmitted in any form or by any means, electronic or mechanical, including photocopying and recording system, except as expressly permitted in writing by SCE.

G:\Projects\SoCal_Edison\Borel\72_Working\map_docs\Biological\Attachment\ATTACHMENT_Borel_NNIP.mxd



LEGEND

- FERC Project Boundary #382
- Borel Canal
- ↑ Flow Direction
- Project Feature

Non-Native Invasive Plants

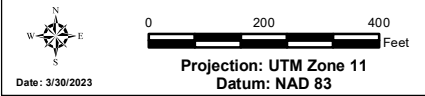
- cheat grass (*Bromus tectorum*)
- cheat grass (*Bromus tectorum*)

*SOURCE: HDR (2021), SoCal Edison (2021), ESRI Aerial (2021).



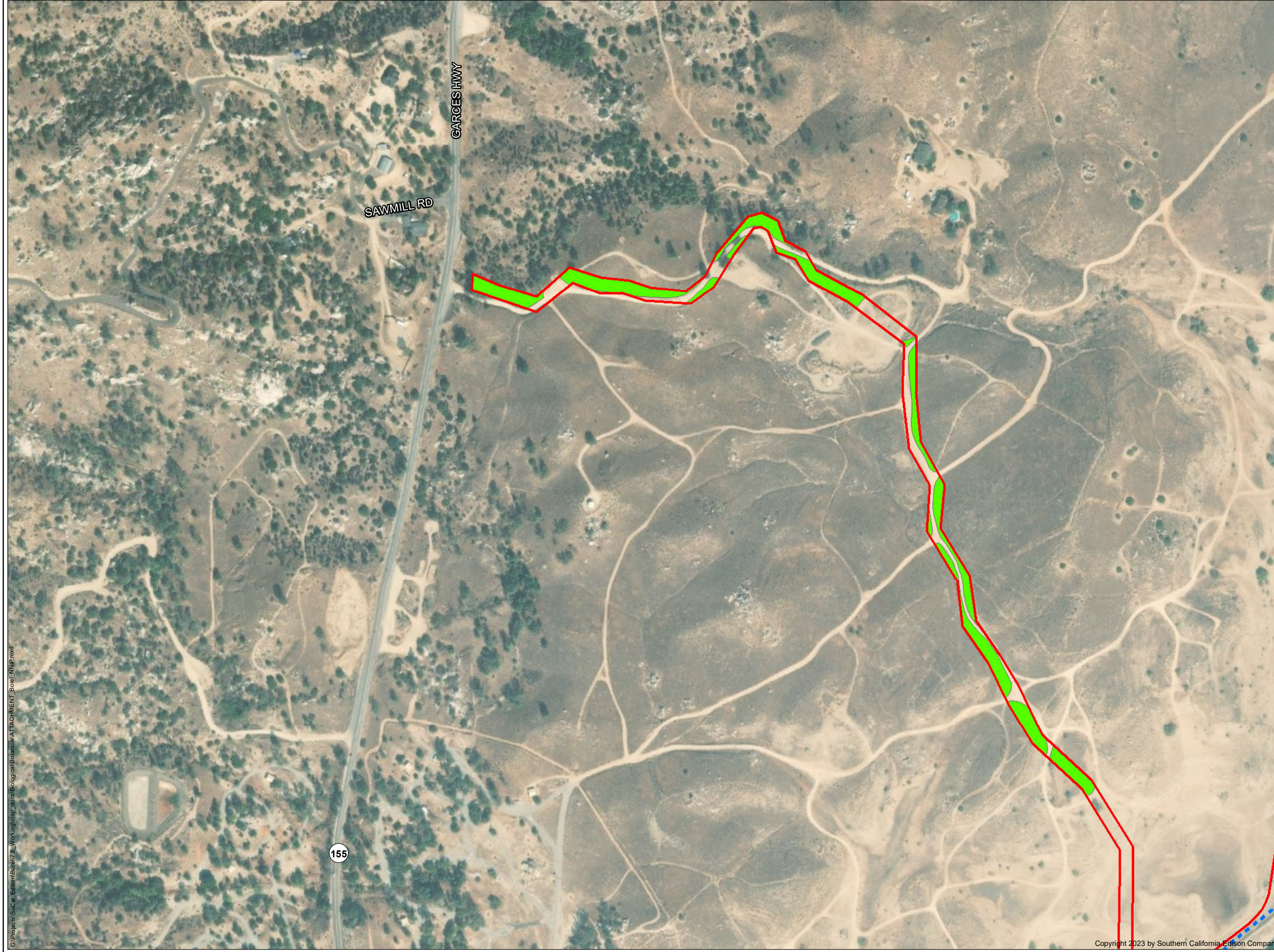
NON-NATIVE INVASIVE PLANTS

BOREL HYDROELECTRIC LICENSE SURRENDER PROJECT
PAGE 3 OF 12



Southern California Edison (SCE) has no reason to believe that there are any inaccuracies or defects with information incorporated in this work and make no representations of any kind, including, but not limited to, the warranties of merchantability or fitness for a particular use, nor are any such warranties to be implied, with respect to the information or data, furnished herein. No part of this map may be reproduced or transmitted in any form or by any means, electronic or mechanical, including photocopying and recording system, except as expressly permitted in writing by SCE.

G:\Projects\SoCal_Edison\Borel\7.2_Working\map_docs\IBiological\Botanical\ATTACHMENT_Borel_NNIP.mxd



LEGEND

- FERC Project Boundary #382
- Borel Canal

Non-Native Invasive Plants

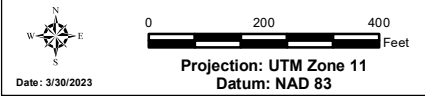
- cheat grass (*Bromus tectorum*)

*SOURCE: HDR (2021), SoCal Edison (2021), ESRI Aerial (2021).



NON-NATIVE INVASIVE PLANTS

BOREL HYDROELECTRIC LICENSE SURRENDER PROJECT
PAGE 4 OF 12



Southern California Edison (SCE) has no reason to believe that there are any inaccuracies or defects with information incorporated in this work and make no representations of any kind, including, but not limited to, the warranties of merchantability or fitness for a particular use, nor are any such warranties implied, with respect to the information or data, furnished herein. No part of this map may be reproduced or transmitted in any form or by any means, electronic or mechanical, including photocopying and recording system, except as expressly permitted in writing by SCE.

G:\Projects\SoCal_Edison\Borel\Y2_Working\map_docs\Biological\Botanical\ATTACHMENT_Borel_NNIP.mxd



LEGEND

- FERC Project Boundary #382
- Borel Canal
- ↑ Flow Direction
- Project Feature

Non-Native Invasive Plants

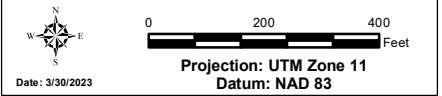
- cheat grass (*Bromus tectorum*)

*SOURCE: HDR (2021), SoCal Edison (2021), ESRI Aerial (2021).



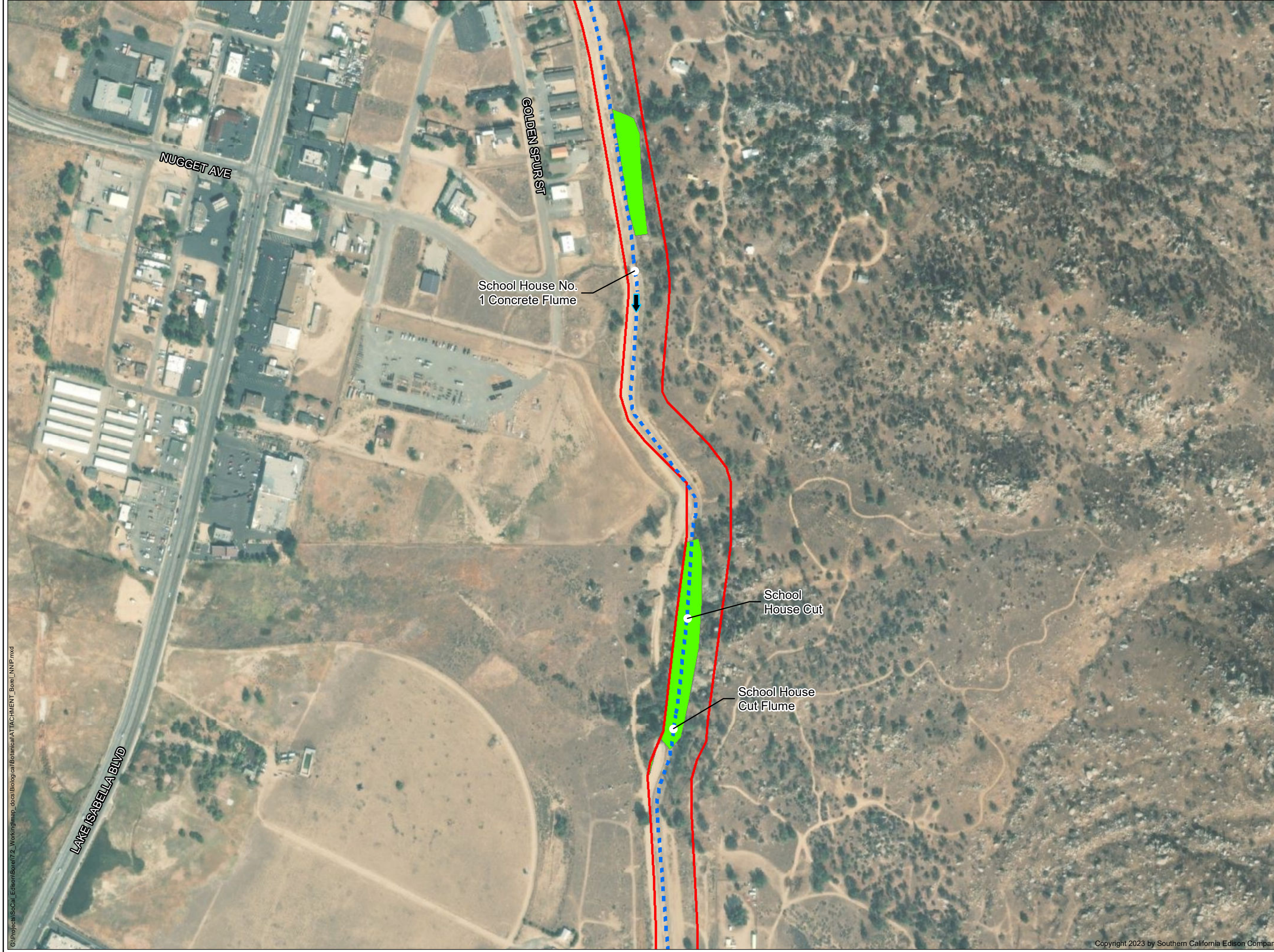
NON-NATIVE INVASIVE PLANTS

BOREL HYDROELECTRIC LICENSE SURRENDER PROJECT
PAGE 5 OF 12



Southern California Edison (SCE) has no reason to believe that there are any inaccuracies or defects with information incorporated in this work and make no representations of any kind, including, but not limited to, the warranties of merchantability or fitness for a particular use, nor are any such warranties implied, with respect to the information or data, furnished herein. No part of this map may be reproduced or transmitted in any form or by any means, electronic or mechanical, including photocopying and recording system, except as expressly permitted in writing by SCE.

G:\Projects\SoCal_Edison\Borel\2_Working\map_docs\BIO\log\calBotanical\ATTACHMENT_Borel_NNIP.mxd



LEGEND

- FERC Project Boundary #382
- Borel Canal
- ↑ Flow Direction
- Project Feature

Non-Native Invasive Plants

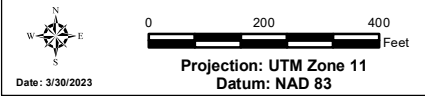
- cheat grass (*Bromus tectorum*)

*SOURCE: HDR (2021), SoCal Edison (2021), ESRI Aerial (2021).



NON-NATIVE INVASIVE PLANTS

BOREL HYDROELECTRIC LICENSE SURRENDER PROJECT
PAGE 6 OF 12



Southern California Edison (SCE) has no reason to believe that there are any inaccuracies or defects with information incorporated in this work and make no representations of any kind, including, but not limited to, the warranties of merchantability or fitness for a particular use, nor are any such warranties implied, with respect to the information or data, furnished herein. No part of this map may be reproduced or transmitted in any form or by any means, electronic or mechanical, including photocopying and recording system, except as expressly permitted in writing by SCE.

G:\Projects\SoCal_Edison\Borel\72_Working\map_docs\Borel\Borel\ATTACHMENT_Borel_NNIP.mxd



LEGEND

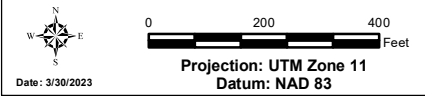
- FERC Project Boundary #382
- Borel Canal
- ↑ Flow Direction
- Non-Project Feature
- Non-Native Invasive Plants**
- White horehound (*Marrubium vulgare*)
- tree of heaven (*Ailanthus altissima*)
- cheat grass (*Bromus tectorum*)
- tree of heaven (*Ailanthus altissima*)

*SOURCE: HDR (2021), SoCal Edison (2021), ESRI Aerial (2021).



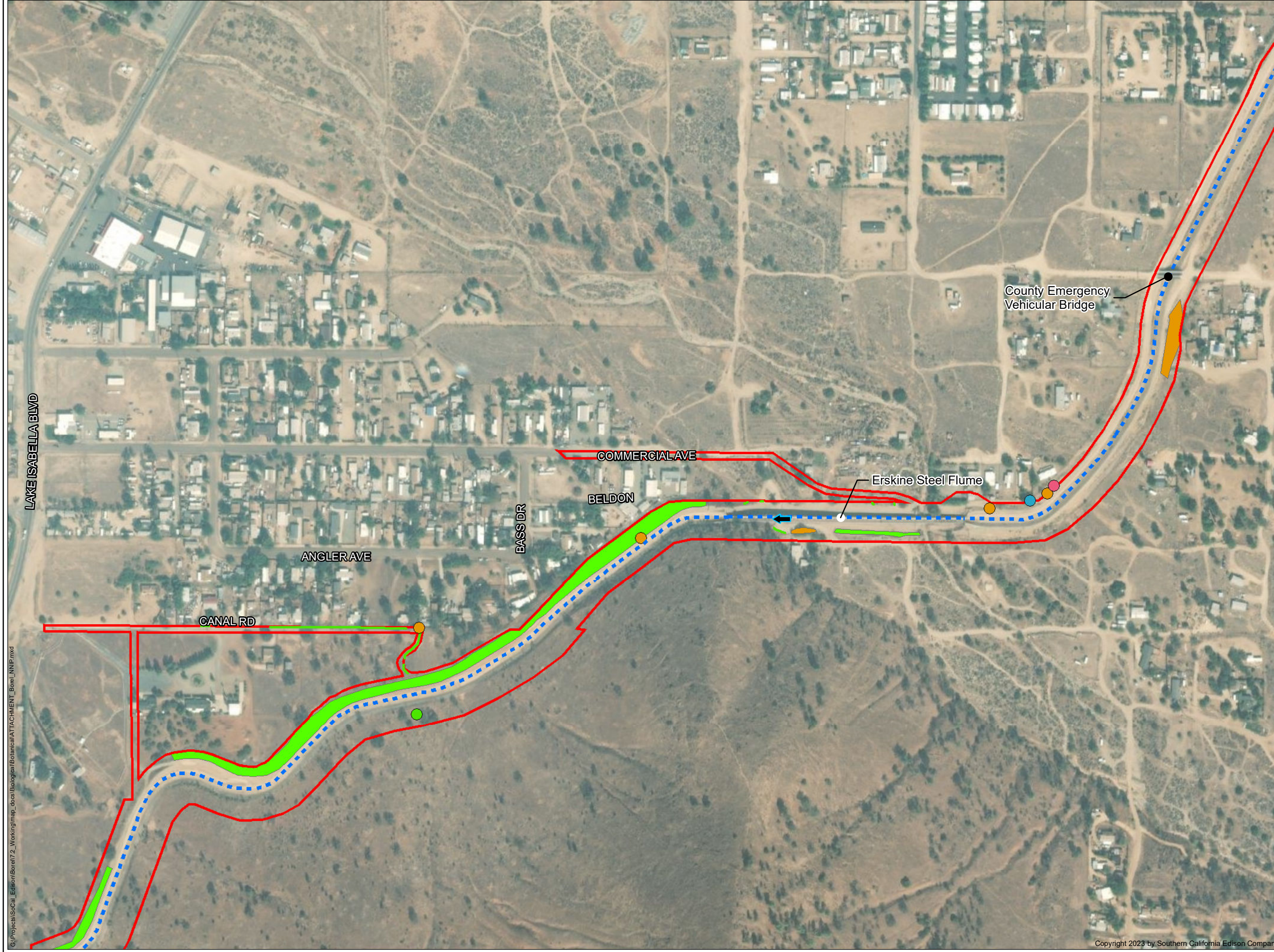
NON-NATIVE INVASIVE PLANTS

BOREL HYDROELECTRIC LICENSE SURRENDER PROJECT
PAGE 7 OF 12



Southern California Edison (SCE) has no reason to believe that there are any inaccuracies or defects with information incorporated in this work and make no representations of any kind, including, but not limited to, the warranties of merchantability or fitness for a particular use, nor are any such warranties implied, with respect to the information or data, furnished herein. No part of this map may be reproduced or transmitted in any form or by any means, electronic or mechanical, including photocopying and recording system, except as expressly permitted in writing by SCE.

G:\Projects\SoCal Edison\Borel\2_Working\map_docs\Borel\biological\Attachment_Borel_NNIP.mxd



LEGEND

- FERC Project Boundary #382
- Borel Canal
- ↑ Flow Direction
- Project Feature
- Non-Project Feature

Non-Native Invasive Plants

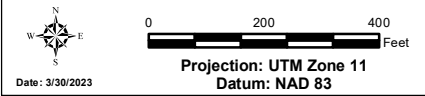
- Black locust (*Robinia pseudoacacia*)
- cheat grass (*Bromus tectorum*)
- giant reed (*Arundo donax*)
- tree of heaven (*Ailanthus altissima*)
- cheat grass (*Bromus tectorum*)
- cheat grass (*Bromus tectorum*)
- tree of heaven (*Ailanthus altissima*)

*SOURCE: HDR (2021), SoCal Edison (2021), ESRI Aerial (2021).



NON-NATIVE INVASIVE PLANTS

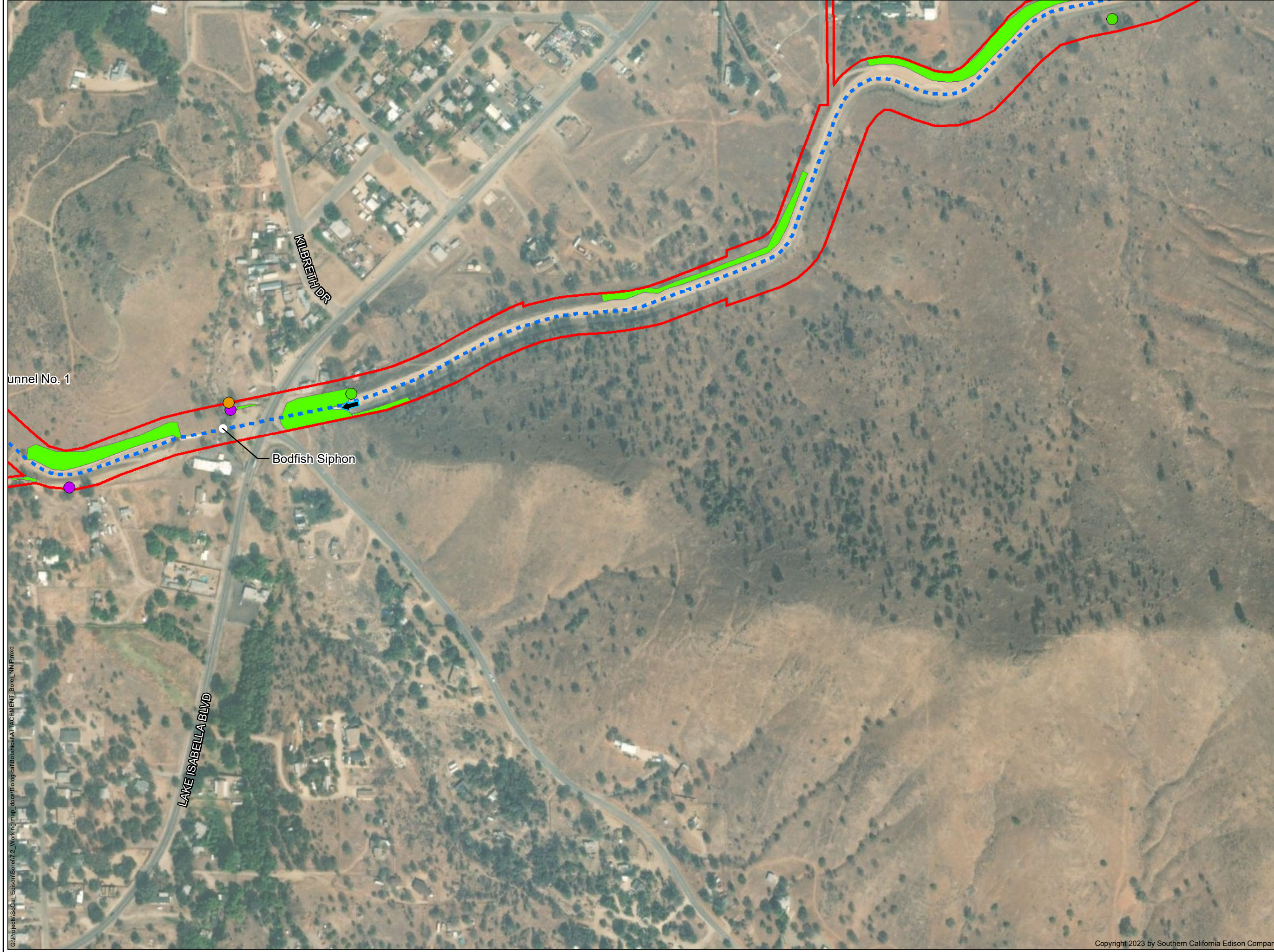
BOREL HYDROELECTRIC LICENSE SURRENDER PROJECT
PAGE 8 OF 12



Date: 3/30/2023

Southern California Edison (SCE) has no reason to believe that there are any inaccuracies or defects with information incorporated in this work and make no representations of any kind, including, but not limited to, the warranties of merchantability or fitness for a particular use, nor are any such warranties to be implied, with respect to the information or data, furnished herein. No part of this map may be reproduced or transmitted in any form or by any means, electronic or mechanical, including photocopying and recording system, except as expressly permitted in writing by SCE.

G:\Projects\SoCal_Edison\Borel\2_Working\map_docs\Biological\Botanical\ATTACHMENT_Borel_NNIP.mxd



LEGEND

- FERC Project Boundary #382
- Borel Canal
- ↑ Flow Direction
- Project Feature

Non-Native Invasive Plants

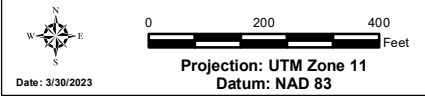
- White horehound (*Marrubium vulgare*)
- cheat grass (*Bromus tectorum*)
- tree of heaven (*Ailanthus altissima*)
- cheat grass (*Bromus tectorum*)

*SOURCE: HDR (2021), SoCal Edison (2021), ESRI Aerial (2021).



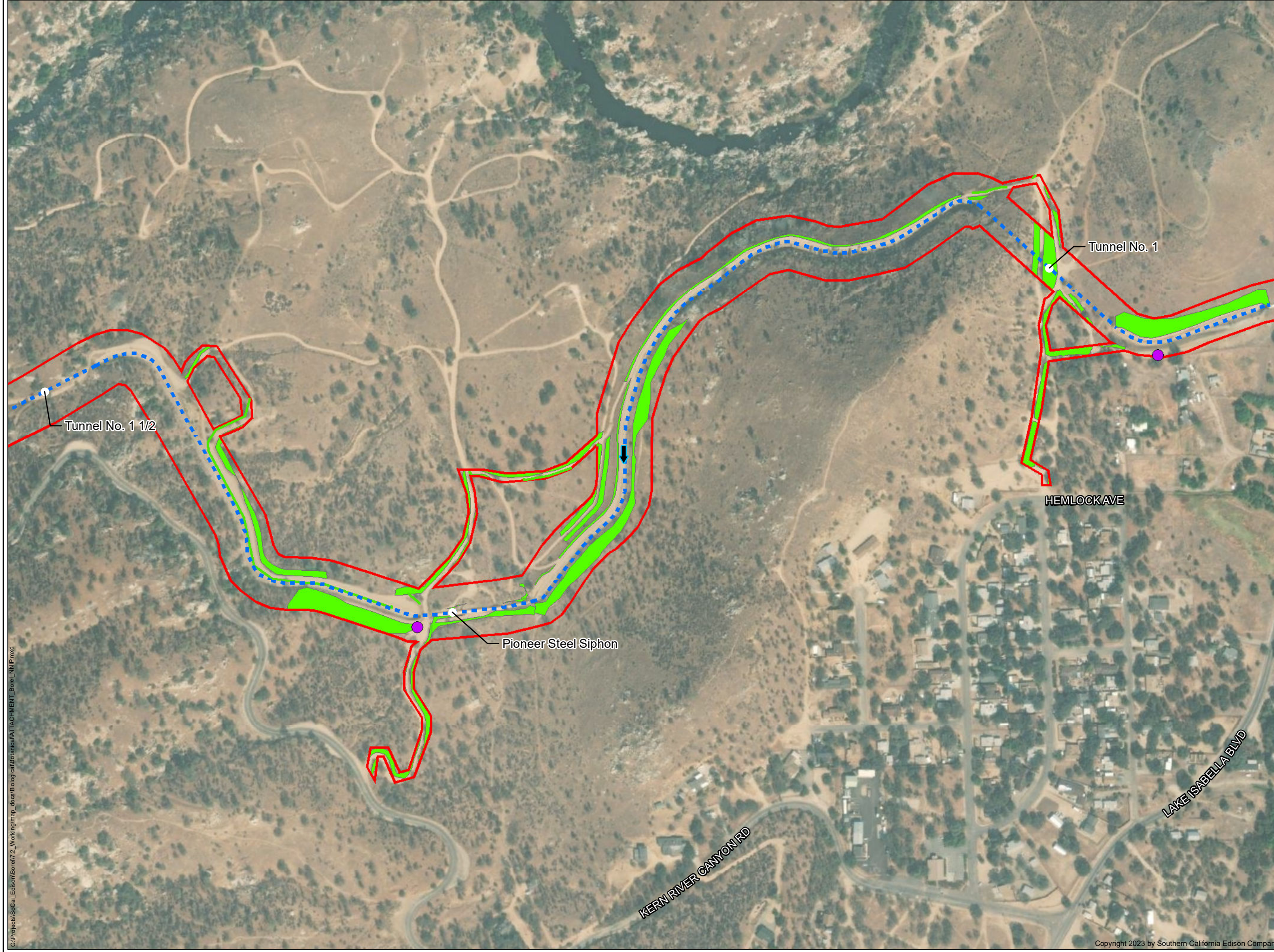
NON-NATIVE INVASIVE PLANTS

BOREL HYDROELECTRIC LICENSE SURRENDER PROJECT
PAGE 9 OF 12



Southern California Edison (SCE) has no reason to believe that there are any inaccuracies or defects with information incorporated in this work and make no representations of any kind, including, but not limited to, the warranties of merchantability or fitness for a particular use, nor are any such warranties implied, with respect to the information or data, furnished herein. No part of this map may be reproduced or transmitted in any form or by any means, electronic or mechanical, including photocopying and recording system, except as expressly permitted in writing by SCE.

G:\Projects\SoCal_Edison\Borel\2_Working\map_docs\Biological\Botanical\ATTACHMENT_Borel_NNIP.mxd



LEGEND

- FERC Project Boundary #382
- Borel Canal
- ↑ Flow Direction
- Project Feature

Non-Native Invasive Plants

- White horehound (*Marrubium vulgare*)
- cheat grass (*Bromus tectorum*)
- cheat grass (*Bromus tectorum*)

Tunnel No. 1

Tunnel No. 1 1/2

Pioneer Steel Siphon

HEMLOCK AVE

LAKE ISABELLA BLVD

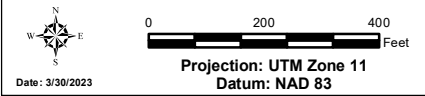
KERN RIVER CANYON RD

*SOURCE: HDR (2021), SoCal Edison (2021), ESRI Aerial (2021).



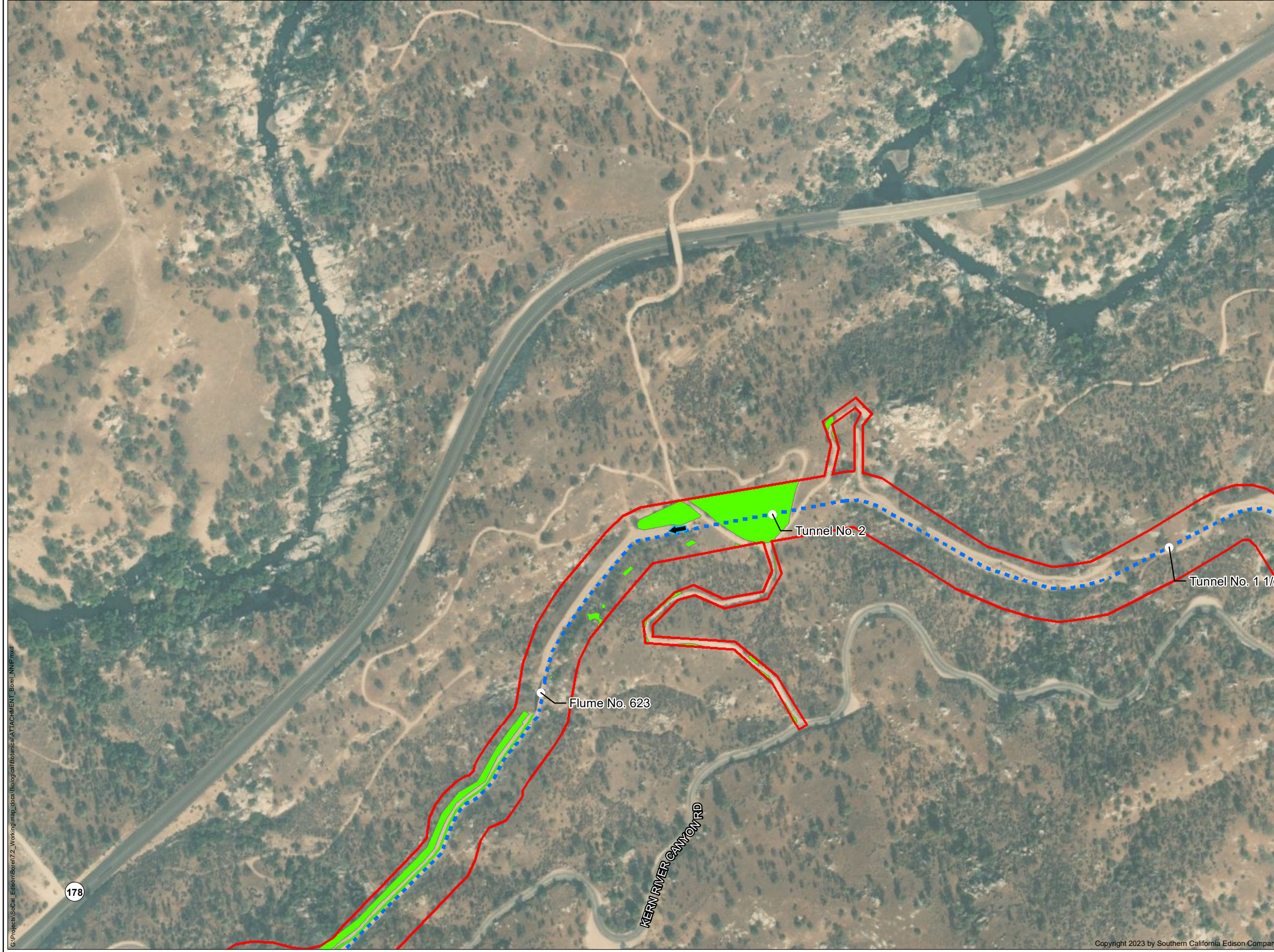
NON-NATIVE INVASIVE PLANTS

BOREL HYDROELECTRIC LICENSE SURRENDER PROJECT
PAGE 10 OF 12



Southern California Edison (SCE) has no reason to believe that there are any inaccuracies or defects with information incorporated in this work and make no representations of any kind, including, but not limited to, the warranties of merchantability or fitness for a particular use, nor are any such warranties implied, with respect to the information or data, furnished herein. No part of this map may be reproduced or transmitted in any form or by any means, electronic or mechanical, including photocopying and recording system, except as expressly permitted in writing by SCE.

G:\Projects\SoCal_Edison\Borel\2_Working\map_docs\Biological\Attachment\ATTACHMENT_Borel_NNIP.mxd



LEGEND

- FERC Project Boundary #382
- Borel Canal
- ↑ Flow Direction
- Project Feature

Non-Native Invasive Plants

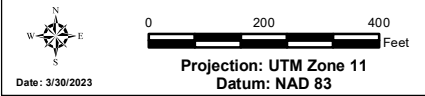
- cheat grass (*Bromus tectorum*)
- cheat grass (*Bromus tectorum*)

*SOURCE: HDR (2021), SoCal Edison (2021), ESRI Aerial (2021).



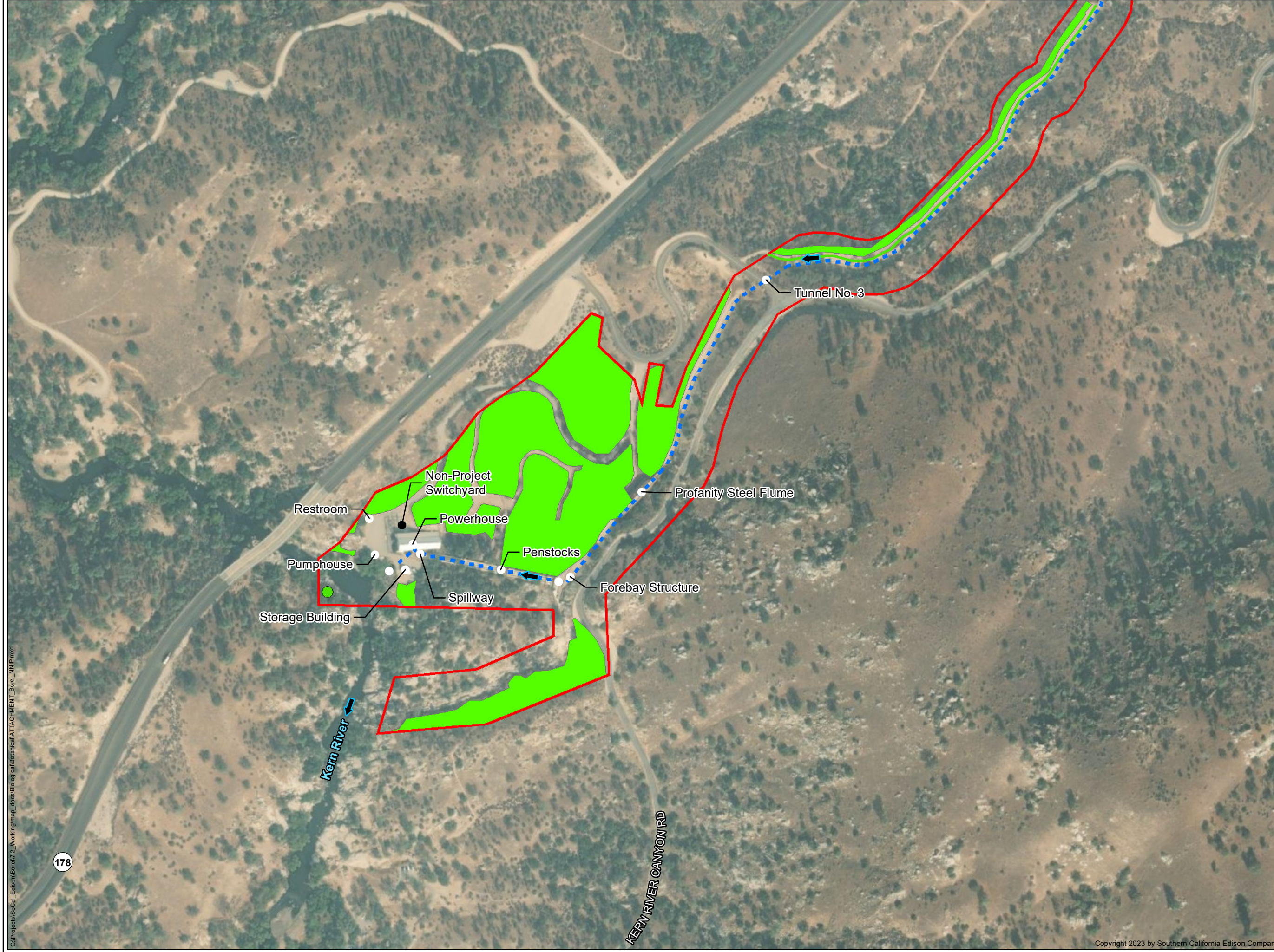
NON-NATIVE INVASIVE PLANTS

BOREL HYDROELECTRIC LICENSE SURRENDER PROJECT
PAGE 11 OF 12



Southern California Edison (SCE) has no reason to believe that there are any inaccuracies or defects with information incorporated in this work and make no representations of any kind, including, but not limited to, the warranties of merchantability or fitness for a particular use, nor are any such warranties implied, with respect to the information or data, furnished herein. No part of this map may be reproduced or transmitted in any form or by any means, electronic or mechanical, including photocopying and recording system, except as expressly permitted in writing by SCE.

G:\Projects\SoCal_Edison\Borel\2_Working\map_docs\Biological\Attachment\ATTACHMENT_Borel_NNIP.mxd



LEGEND

- FERC Project Boundary #382
- Borel Canal
- ↑ Flow Direction
- Project Feature
- Non-Project Feature

Non-Native Invasive Plants

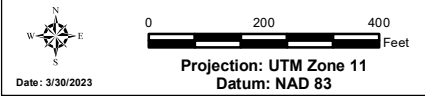
- cheat grass (*Bromus tectorum*)
- cheat grass (*Bromus tectorum*)
- cheat grass (*Bromus tectorum*)

*SOURCE: HDR (2021), SoCal Edison (2021), ESRI Aerial (2021).



NON-NATIVE INVASIVE PLANTS

BOREL HYDROELECTRIC LICENSE SURRENDER PROJECT
PAGE 12 OF 12



Southern California Edison (SCE) has no reason to believe that there are any inaccuracies or defects with information incorporated in this work and make no representations of any kind, including, but not limited to, the warranties of merchantability or fitness for a particular use, nor are any such warranties to be implied, with respect to the information or data, furnished herein. No part of this map may be reproduced or transmitted in any form or by any means, electronic or mechanical, including photocopying and recording system, except as expressly permitted in writing by SCE.

G:\Projects\SoCal_Edison\Borel\2_Working\map_docs\Borel\Borel\ATTACHMENT_Borel_NNIP.mxd

178

KERN RIVER CANYON RD